



**QUICKBUILT**  
HOME SYSTEMS®



MODULAR  
HOMES & CABINS

## Quick Built Homes Smarter, Faster, and More Sustainable Modular Living

Quick Built Homes is a family-owned business with over 15 years of experience dedicated to revolutionising how Australians build modular homes and cabins. We combine innovation, quality, and efficiency to deliver homes that are quick to assemble, energy-efficient, and built to last.

Our homes use an advanced **Structural Insulated Panel System (SIPS)**—a fully insulated, prefabricated panel solution that ensures superior thermal comfort, reduces energy costs, and provides exceptional strength. Delivered as a **pre-cut flat pack kit** complete with all fixings, our system is perfect for DIY enthusiasts, Owner Builders, or anyone looking to simplify the building process.



DIY & Owner Builder Friendly



Can Achieve 7 Star Energy Efficiency Rating



Fast Quoting & Construction



High-Quality Australian Made



Third Generation Family owned



Sustainable & Low Waste



Flexible & Customisable



Cost-Effective



Minimal Site Disruption



Thermal & Acoustic Insulation

# Modular Kit Home Designs

## THE EYRE

**14.4M<sup>2</sup>**

	Width	Depth
Overall	4.8m	3.0m
Living	4.8m	3.0m
Bedroom	N/A	N/A
Bathroom	N/A	N/A
Patio	4.8m	1.2m

Optional QS modular steel flooring system available. Including SHS Piers and excluding flooring and decking.



## THE FLINDERS

**19.92M<sup>2</sup>**

	Width	Depth
Overall	4.8m	4.15m
Living	4.8m	4.15m
Bedroom	N/A	N/A
Bath/Store	2.2m	1.1m
Patio	4.8m	0.65m

Optional QS modular steel flooring system available. Including SHS Piers and excluding flooring and decking.



## THE CABANA

**18.0M<sup>2</sup>**

	Width	Depth
Overall	3.0m	6.0m
Living	3.0m	6.0m
Bedroom	N/A	N/A
Bathroom	N/A	N/A
Patio	0.6m	6.0m

Optional QS modular steel flooring system available. Including SHS Piers and excluding flooring and decking.



## THE DAINTREE

**25.92M<sup>2</sup>**

	Width	Depth
Overall	7.2m	3.6m
Living	4.6m	3.6m
Bedroom	2.6m	2.6m
Bathroom	2.6m	1.0m
Patio	3.6m	1.8m

Optional QS modular steel flooring system available. Including SHS Piers and excluding flooring and decking.



**THE VILLA****30.24M<sup>2</sup>**

	Width	Depth
Overall	8.4m	3.6m
Living	7.2m	3.6m
Bedroom	N/A	N/A
Bathroom	1.2m	3.6m
Patio	8.4m	3.0m

Optional QS modular steel flooring system available. Including SHS Piers and excluding flooring and decking.

**THE KAKADU****58.32M<sup>2</sup>**

	Width	Depth
Overall	16.2m	3.6m
Living	8.6m	3.6m
Bedroom	3.0m	3.6m
Bathroom	1.2m	2.1m
Patio	8.4m	1.8m

Optional QS modular steel flooring system available. Including SHS Piers and excluding flooring and decking.

**THE KATHERINE****56.16M<sup>2</sup>**

	Width	Depth
Overall	8.4m	7.2m
Living	7.2m	3.6m
Bedroom	3.6m	3.6m
Bathroom	1.2m	2.7m
Patio	3.6m	1.2m

Optional QS modular steel flooring system available. Including SHS Piers and excluding flooring and decking.

**THE KIMBERLEY****59.67M<sup>2</sup>**

	Width	Depth
Overall	8.3m	7.2m
Living	8.3m	3.6m
Bedroom	3.6m	3.5m
Bathroom	1.2m	2.7m
Patio	3.6m	1.8m

Optional QS modular steel flooring system available. Including SHS Piers and excluding flooring and decking.



## Effortless Living, the Quick Built Way

At Quick Built Homes, we believe your home should be as unique as you are. That's why we've created a building process that puts you in the driver's seat. From the initial idea through to the final installation.

With over 25 years of experience in modular and kit home manufacturing, we combine expert craftsmanship with true customisation. Whether you're building a cabin, a granny flat, or your dream home, our flexible process ensures the result reflects your lifestyle, taste, and vision.

### Step 1 - Design Consultations Tailored to You

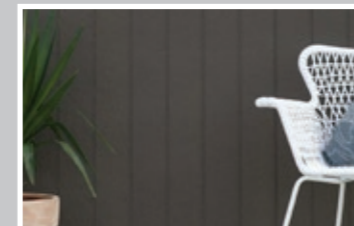
Every great home begins with a great idea... yours. Sit down with one of our experienced designers to talk through your dream layout, features, finishes, and function.

Whether you're building a luxury retreat, a family cabin, or a versatile granny flat, we'll help shape your ideas into your dream modular design.

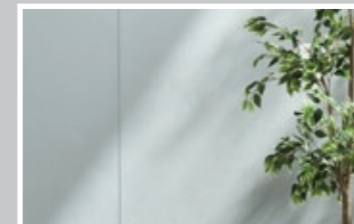
### Step 2 - Personalisations

#### Exterior Cladding Options

First impressions matter. That's why we offer a wide range of cladding options, so your home looks exactly the way you want it to, from contemporary smooth finishes to classic textured profiles. Whether you're after modern, coastal, country, or minimalist styling, we have the materials and colours to bring your exterior to life.



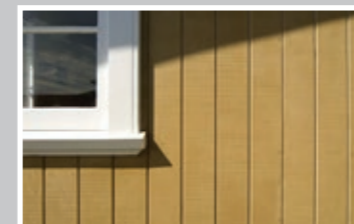
**James Hardy Axon Cladding**  
Comes as standard



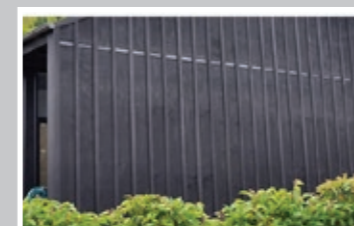
**James Hardy Fine Texture Cladding**



**James Hardy Brushed Concrete Cladding**

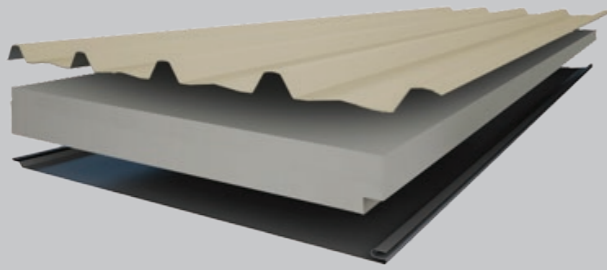


**Timber Shadowclad Grooved Cladding**

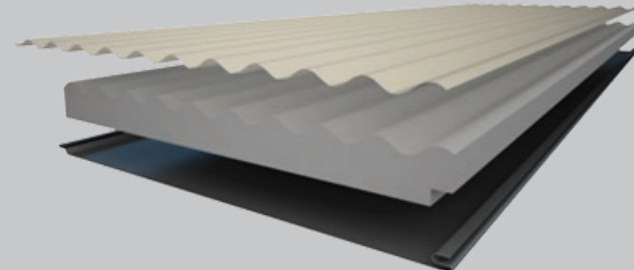


**Timber Shadowclad Textured Cladding**

## Roofing Styles



Mono Profile



Corro Profile

## Colour Range

### Classic Finish



**Dover White™**  
Classic finish  
SA = 0.28



**Surfmist®**  
Classic finish  
SA = 0.33



**Evening Haze®**  
Classic finish  
SA = 0.43



**Southerly®**  
Classic finish  
SA = 0.40



**Dune®**  
Classic finish  
SA = 0.48



**Paperbark®**  
Classic finish  
SA = 0.43



**Classic Cream™**  
Classic finish  
SA = 0.33



**Shale Grey™**  
Classic finish  
SA = 0.44



**Bluegum®**  
Classic finish  
SA = 0.57



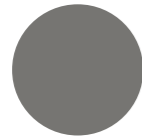
**Windspray®**  
Classic finish  
SA = 0.60



**Gully®**  
Classic finish  
SA = 0.64



**Jasper®**  
Classic finish  
SA = 0.67



**Wallaby®**  
Classic finish  
SA = 0.64



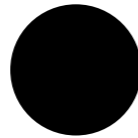
**Basalt®**  
Classic finish  
SA = 0.67



**Woodland Grey®**  
Classic finish  
SA = 0.70



**Monument®**  
Classic finish  
SA = 0.73



**Night Sky®**  
Classic finish  
SA = 0.95



**Ironstone®**  
Classic finish  
SA = 0.73



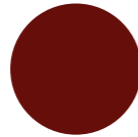
**Deep Ocean®**  
Classic finish  
SA = 0.74



**Cottage Green®**  
Classic finish  
SA = 0.73



**Pale Eucalypt®**  
Classic finish  
SA = 0.60



**Manor Red®**  
Classic finish  
SA = 0.70

**Colorbond®**

### COLORBOND® STEEL CORE COLOURS

With 22 pale, mid and deep toned COLORBOND® steel core colours, and six colours also available in a premium Matt finish, you can enjoy the process of discovering the perfect colour scheme and design palette for your dream home.

Select from these colours for your roofing, walling, fascias, gutters, downpipes and garage doors.

For further colour inspiration visit [COLORBOND.COM](https://www.colorbond.com)

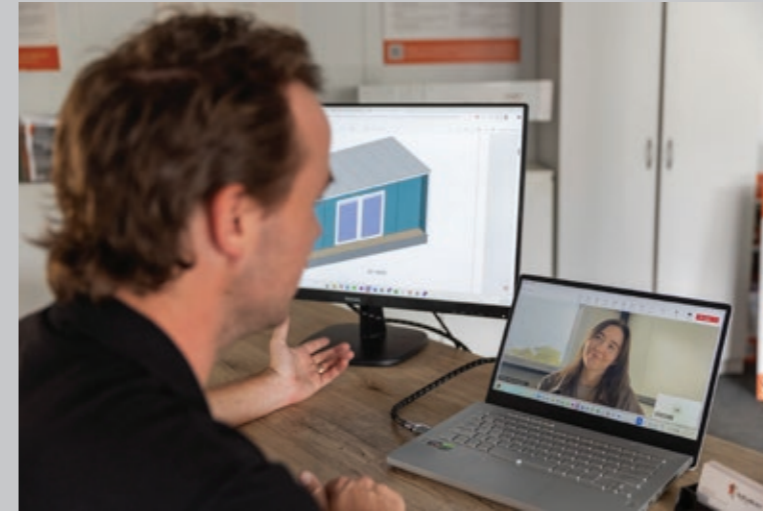
#### Legend

SA = (Solar Absorptance) is a measure of how much of the sun's heat that a material absorbs. Choosing a colour with a lower SA is a cooler option and may help you meet building regulations such as NCC or BASIX. These are nominal values based on new product and measured in accordance with ASTM E 903-96.

- U Available in COLORBOND® Ultra steel for coastal and industrial environments. Other colours in the Classic finish may be available on request.
- L Dark colours limited warranty.

## Step 3 - Prefabricated with Precision

Once your design is finalised, we manufacture your home using our high-quality, Australian-made composite panels. Our efficient prefabrication process ensures faster turnarounds, reduced site disruption, and unmatched build quality.



## Step 4 - Delivered & Built

Your kit is delivered directly to your site, ready for easy assembly—whether you're taking the DIY approach, working with your preferred builder, or using one of our trusted construction partners. Either way, we're here to support you every step of the way to ensure a smooth and stress-free build.



## Inclusions

- **External Wall Panels** - QuickBuilt Modular Wall Panels consisting of 9mm Duragroove External Cladding and 6mm Duraliner Internal Cladding.
- **Internal Wall Panels** - QuickBuilt Modular Wall Panels consisting of 6mm Duraliner both sides.
- **Ceiling Panels** - QuickBuilt Modular Ceiling Panels consist of 4.5mm Durasheet external cladding and 6mm Duraliner Internal Cladding.
- **Roofing** - 0.42 Colorbond Corrugated Iron Roofing Sheets.
- **Insulation** - 'SL' Grade Expanded Polystyrene (EPS-FR) incorporating a flame retardant additive.
- **Module Framing** - TrueCore Blue Termite resistant Steel Framing Sections.
- **Windows and Doors** - Aluminium Sliding Windows and Doors.
- **Sundries** - Complete Set of screws as required for erection, External Flashings, gutter and Corner Angles.
- **Engineering** - QuickBuilt Modular Homes come complete with Engineering details ready for council submission.
- **QBS Patio Kit** - Slimline patio roofing with Alysplan aluminium beams and posts.

## Options

- **Steel Flooring** - Pre-Cut Steel Flooring system including piers
- **Kitchen** - Quickbuilt modular kitchen

## Exclusions

- **Delivery** - Pricing on delivery available during quotation stage subject to location and access.
- Site Preparation and Footings (or Concrete Slab)
- Timber Flooring and Decking
- Floor Coverings
- Rainwater goods or connections
- Plumbing and Electrical Wiring, Hardware, Fittings and installation.
- Plaster Fixing and Setting Requirements
- External and Internal Paint
- Kitchen and Bathroom
- Installation
- Council Fees and Energy Rating or Bushfire Hazard Assessment Report.

# QUICKBUILT

## Quick Built Systems

21 Econo Place, Silverdale NSW 2752

[sales@quickbuiltsystems.com.au](mailto:sales@quickbuiltsystems.com.au)

**1300 132 787**

[www.quickbuiltsystems.com.au](http://www.quickbuiltsystems.com.au)